

www.jeffreygross.co.uk

CARDIFF

VALE

CAERPHILLY

BRISTOL



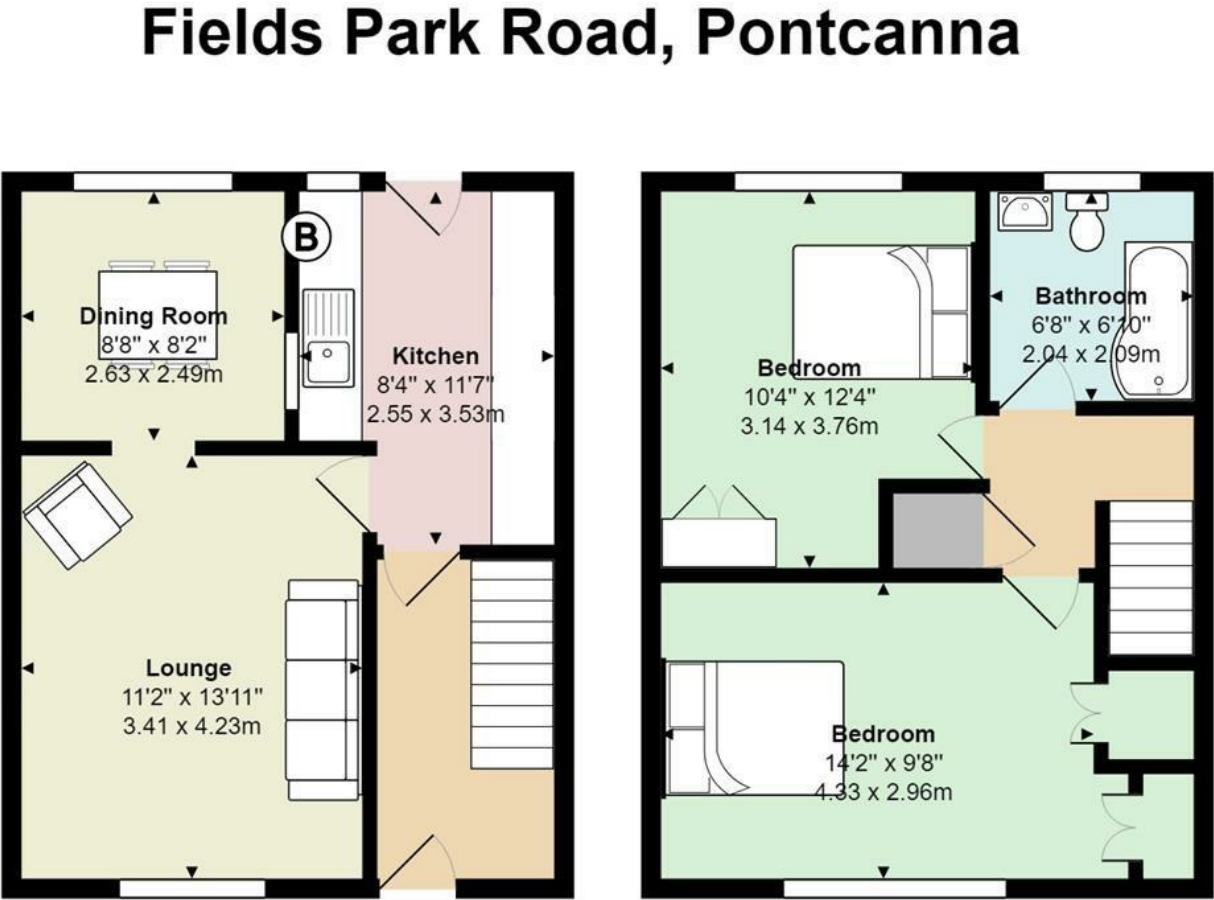
Fields Park Road



Comments by Ms Gemma Simmonite

Property Specialist
Ms Gemma Simmonite
Lettings Negotiator

gemma.simmonite@jeffreycross.co.uk



Total Area: 788 ft² ... 73.2 m²

All measurements are approximate and for display purposes only

Comments by the Homeowner



Fields Park Road

, Cardiff, CF11 9HZ

PCM

£1,300 PCM



2 Bedroom(s)



1 Bathroom(s)



788.00 sq ft



Contact our
Pontcanna Branch
02920 499680

We are delighted to present this fully furnished 2 bedroom semi-detached house in the heart of Pontcanna to the market. The property comprises of a large entrance hall leading in to a modern fitted kitchen with electric hob and oven and white goods included. Further leading to a large living room with separate dinning room at the rear. Upstairs then benefits from two large double bedrooms, and a bathroom with bath and shower. The property further benefits from a spacious back garden with a large stone patio area and has off-road parking.

EPC RATING of B.
COUNCIL TAX BAND of E.

A holding fee of one weeks' rent will be payable to secure the property. This will be deducted from the final balance payable upon moving into the property, subject to a successful application. JeffreyRoss Limited reserves the right to retain this payment should the applicant have provided false or misleading information at the time of applying for the Tenancy or failed to take reasonable steps to enter into the tenancy agreement.





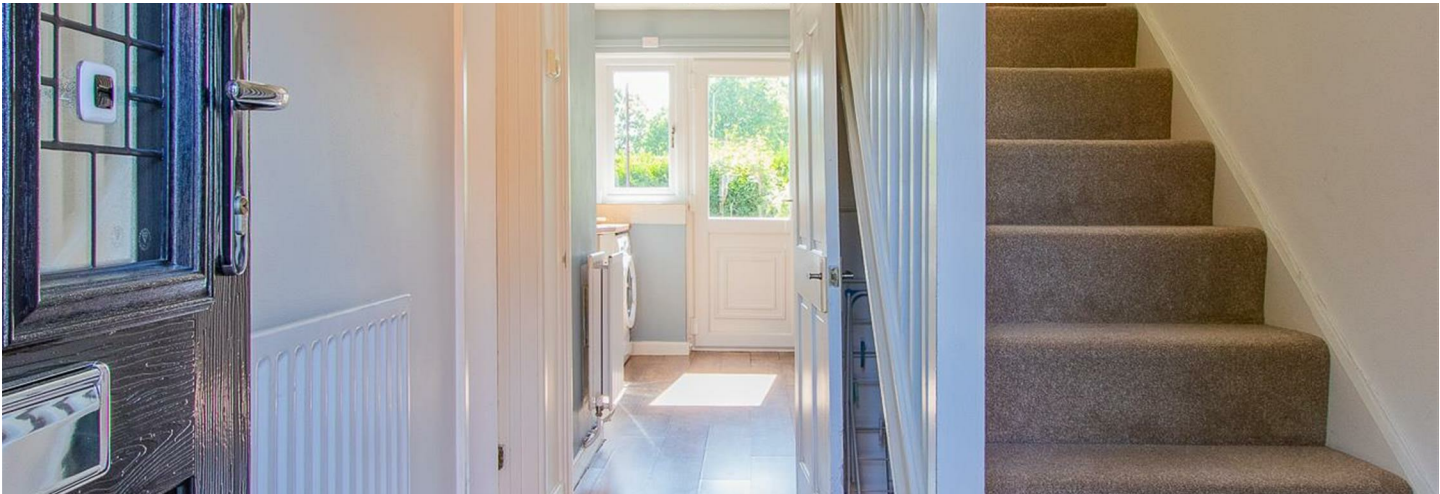
CARDIFF

VALE

CAERPHILLY

BRISTOL

www.jeffreygross.co.uk





Energy Efficiency Rating		
	Current	Potential
Very energy efficient - lower running costs		
(92 plus) A		86
(81-91) B		
(69-80) C	72	
(55-68) D		
(39-54) E		
(21-38) F		
(1-20) G		
Not energy efficient - higher running costs		
England & Wales		EU Directive 2002/91/EC

